



## **Suffolk Constabulary Child Sexual Exploitation Awareness**



**NORFOLK**  
CONSTABULARY

*Our Priority is You*

[www.norfolk.police.uk](http://www.norfolk.police.uk)



**SUFFOLK**  
CONSTABULARY

*Taking pride in keeping Suffolk safe*

[www.suffolk.police.uk](http://www.suffolk.police.uk)

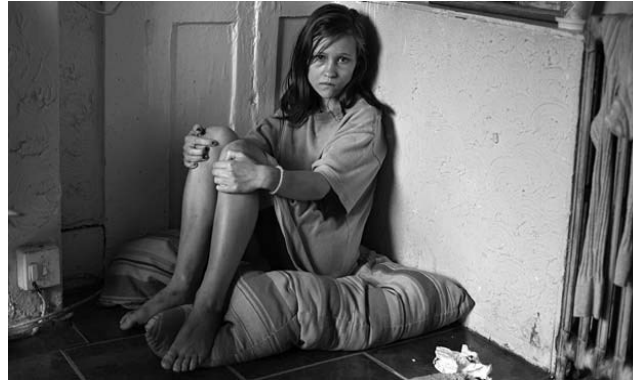
# Child Sex Exploitation

It is a relationship where young people U18 receive “something” as a result of them performing on or allowing others to perform on them, sexual activities.

It can also occur through the use of technology without the child’s understanding or recognition, for example being persuaded to post sexual images on the Internet, social media or mobile phones without immediate payment or gain.



# Introduction



- Far more widespread than generally recognised
- CSE remains largely hidden but it is acknowledged that it is widespread.
- *(In 2012/13 CEOP received 18,887 reports relating to child sexual exploitation)*

# Why?



- To raise the level of awareness
- We need to identify and support victims of CSE

# If it all seems too good to be true...

*He is the friend  
I've always  
wanted, he buys  
me things*

**CHILD SEXUAL EXPLOITATION**  
**THE MORE YOU KNOW THE MORE YOU SEE**  
**NORFOLK.POLICE.UK/CSE**

# Grooming







## Targeting stage

- Observing the child/ young person
- Selection of child/ young person
- Befriending – being nice, giving gifts, caring, taking an interest, giving compliments, etc
- Gaining and developing trust
- Sharing information about young people between other abusive adults



## Friendship forming stage

- Making young people feel special
- Giving gifts and rewards
- Spending time together
- Listening and remembering
- Keeping secrets
- Being there for them
- 'No-one understands you like I do'; being their best friend
- Testing out physical contact – accidental touching
- Offering protection



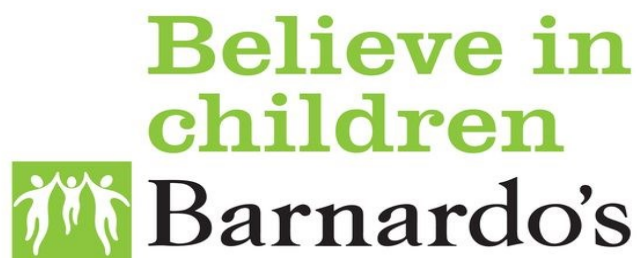
## Loving relationship stage

- Being their boyfriend/girlfriend
- Establishing a sexual relationship
- Lowering their inhibitions – eg showing them pornography
- Engaging them in forbidden activities – eg going to clubs, drinking, taking drugs
- Being inconsistent – building up hope and then punishing them



## Abusive relationship stage

- Becomes an 'unloving' sexual relationship
- Withdrawal of love and friendship
- Reinforcing dependency on them – stating young person is 'damaged goods'
- Isolation from family and friends
- Trickery and manipulation – 'you owe me'
- Threatening behaviour
- Physical violence
- Sexual assaults
- Making them have sex with other people
- Giving them drugs
- Playing on the young person's feeling of guilt, shame and fear





# Any Questions?

